



Automotive Industry Support using ITIM's Open Equipment

Oct. 09 2014

ITIM

**Industrial Technology Institute,
Miyagi Prefectural Government**



Mission of ITIM

+ TITLE ▶



Open Equipment and Facilities for Automotive Industry Support

1) EMC evaluation for car electrical components

(EMC : Electromagnetic Compatibility)



CISPR25 radiated emissions

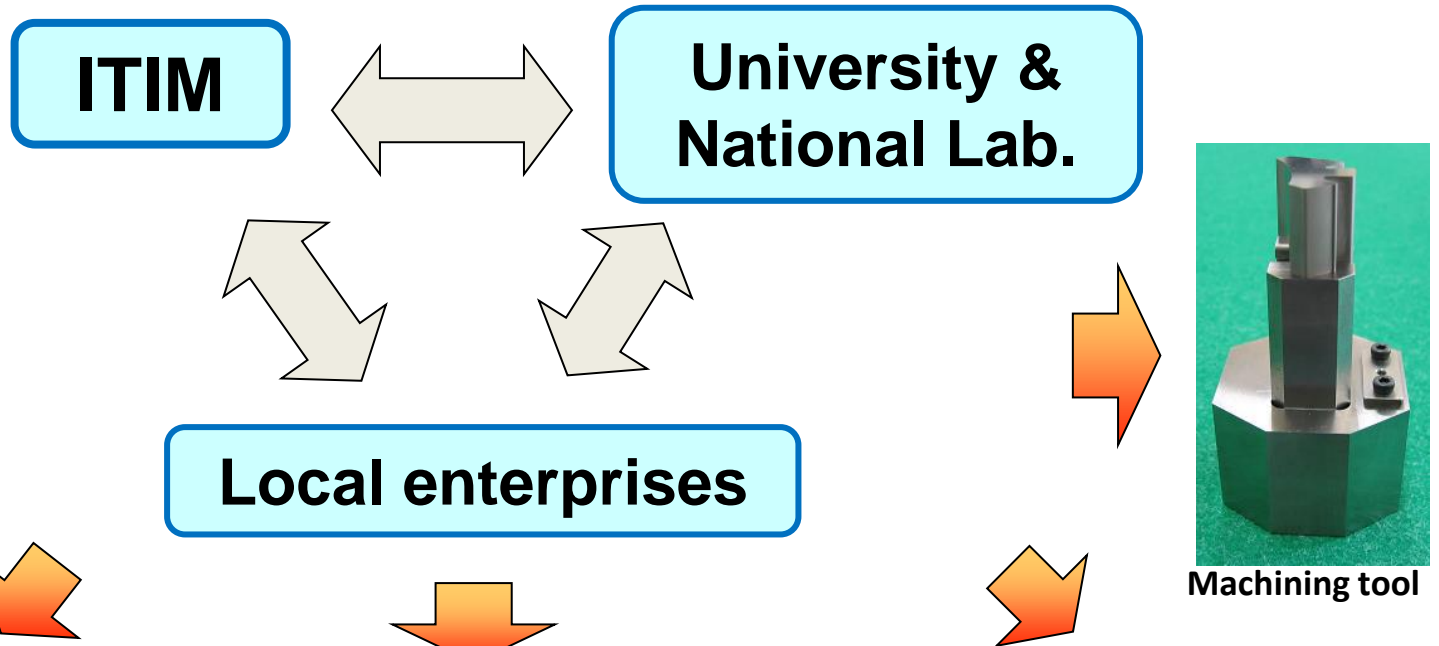
- EMC anechoic chamber and shielded room
- EMC evaluation based on international standards
- Electrostatic discharge immunity test

2) Molding and Sintering of metals and ceramics

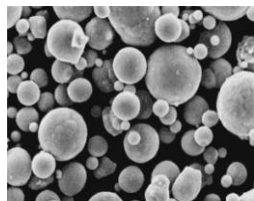
3) Development and Evaluation of electronic devices

4) Environmental tests and evaluation

R&D with Industry-Academia-Government collaboration



“Sasa-kama” fish cake



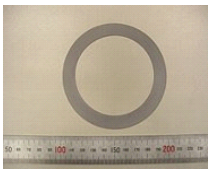
Powder material



Filter



Ceramic plate



Cutting blade



Toothed wheel



CO₂ coating

Technical seminar for automotive systems



Continuously Variable
Transmission : CVT



Electric motor for
Hybrid Vehicle(HV) system

Supporting Local enterprises to select a development target
about automotive systems



宮城県産業技術総合センター

INDUSTRIAL TECHNOLOGY INSTITUTE. MIYAGI PREFECTURAL GOVERNMENT



**Address: 2-2, Akedohri, Izumi-ku,
Sendai-shi, Miyagi-ken, 981-3206, JAPAN.**

Phone: +81-22-377-8700

Fax: +81-22-377-8712

Web www.mit.pref.miyagi.jp

 ・仙台駅より車で40分 / 東北自動車道 泉 I.C.より15分

 ・地下鉄泉中央駅より路線バスで約25分

乗降り場 ▶ 「宮城大学前経由 泉パークタウン車庫」行き
「宮城大学・仙台保健福祉専門学校前」下車徒歩3分

・仙台駅より路線バスで約40分

バスプール2乗降り場 ▶ 「宮城大学・仙台保健福祉専門学校前」行き
「宮城大学・仙台保健福祉専門学校前」下車徒歩3分